



## TechTip: User-defined part properties for machining of enclosures

To optimally support the machining of an enclosure (mounting plate, door, roof plate, etc.) or enclosure accessories (side panel, partial mounting plate, partial door, etc.) with **Rittal Perforex Milling Terminal MT**, user-defined part properties are required for the **Material**, the **Material thickness** and the **Surface**. This user guide shows how these properties can be subsequently assigned to a part.

### Preparation

1. Open the parts management in Eplan Pro Panel (command path: Tab **Master data** > Command group **Parts** > **Management**).
2. Select one of the following nodes in the tree view: **Parts** > **Mechanics** > **Component** > **Enclosure** or **Parts** > **Mechanics** > **Housing**.
3. Click the **[Extras]** button.
4. Select the **Configure properties** menu item.
5. In the subsequent dialog by the same name click the  (**Import**) button in the toolbar (left).
6. In the **Import user-defined properties** dialog select the `PcPm.UserDefinedPropertiesForMachining.xml` file.
7. Import the file using the **[Open]** button.
8. Confirm the import in the **Configure properties** dialog by clicking **[OK]**.
9. Confirm the subsequently displayed message as well by clicking **[OK]**.
10. Close the **Configure properties** dialog by clicking **[OK]**.
11. Bring the **User-defined properties** tab to the foreground.
12. Click the **[...]** button next to the drop-down list for the scheme selection.
13. Click the  (**Import**) button in the **Configure properties** dialog in the toolbar next to the scheme selection.
14. In the subsequent dialog select the following files and import them by using the **[Open]** button:

- `PMcs.BasePlinth.xml`
- `PMcs.FrontPanel.xml`
- `PMcs.DividerPanel.xml`
- `PMcs.Door.xml`
- `PMcs.Enclosure.xml`
- `PMcs.FlangePlate.xml`
- `PMcs.GlandPlate.xml`
- `PMcs.MountingPlate.xml`
- `PMcs.RoofPlate.xml`
- `PMcs.SidePanel.xml`
- `PMcs.TopMountingModule.xml`
- `PMcs.TrimPanel.xml`

15. Close the **Configure properties** dialog by clicking **[OK]**.

## Assign user-defined part properties

1. Remain in the parts management on the **User-defined properties** tab.
2. In the tree view select a part from the Housing or Enclosure product group.
3. In the right-hand section of the dialog select a suitable **scheme** from the drop-down list, e.g. `Mounting plate` (user-defined part properties for a mounting plate).
4. Click the **[Assign scheme]** button.
5. Repeat these steps to assign all schemes for all enclosure parts (door, roof plate, rear panel, gland plate) to the part.

One scheme each is available for the following enclosure parts:

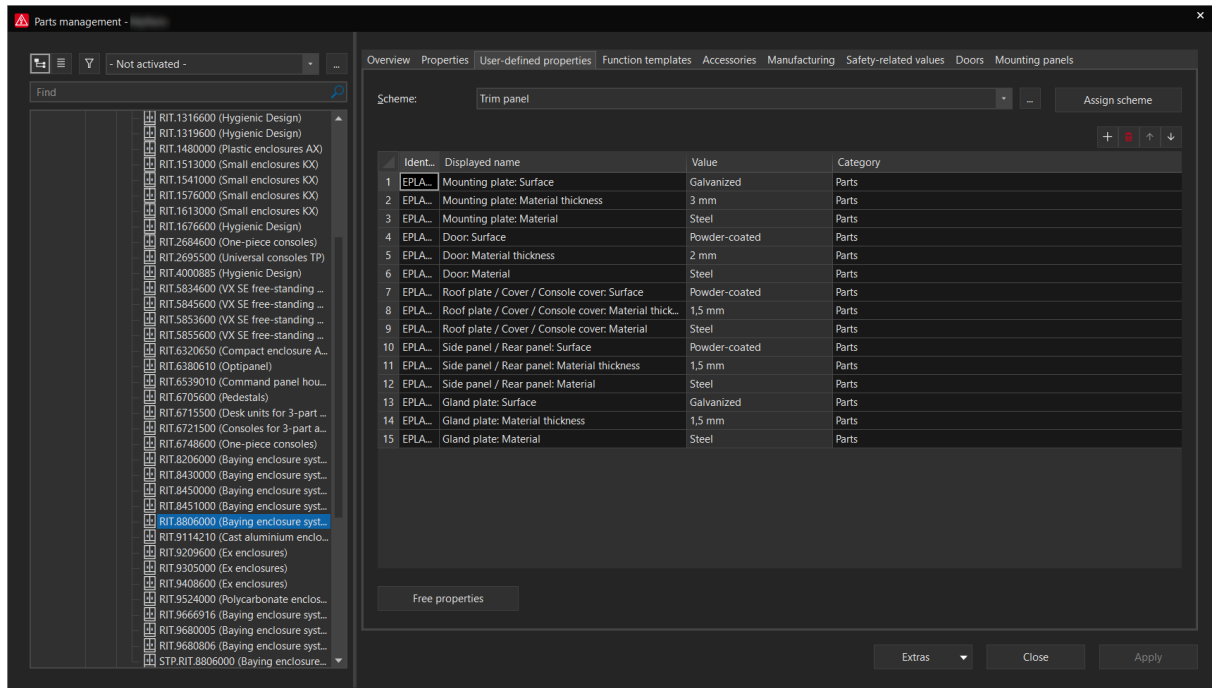
- Trim panel (front, back, side) for base/plinth, trim panel (front, back) for cable chamber  
(PMcs.BasePlinth.xml)
- Front panel and blanking plate  
(PMcs.FrontPanel.xml)
- Divider panel  
(PMcs.DividerPanel.xml)
- Door, partial door, operating panel, cover and console cover  
(PMcs.Door.xml)
- Enclosure and interlock kit  
(PMcs.Enclosure.xml)
- Flange plate, module plate  
(PMcs.FlangePlate.xml)
- Gland plate  
(PMcs.GlandPlate.xml)
- Mounting plate, partial mounting plate, partial assembly plate, mounting plate infill  
(PMcs.MountingPlate.xml)
- Roof plate and cover  
(PMcs.RoofPlate.xml)
- Side panel, rear panel, side panel for cable chamber, side panel for top-mounting module  
(PMcs.SidePanel.xml)
- Top-mounting module  
(PMcs.TopMountingModule.xml)
- Trim panel  
(PMcs.TrimPanel.xml)

## Assign property values

After you have assigned or more schemes to a part, you now have to assign a property value to the user-defined part properties **Material**, **Material thickness** and **Surface**. The value for the properties **Material** and **Surface** is specified in a selection list. For the **Material thickness** property you have to enter a value in "mm" or "inch" (number and unit). The respective values for a part are specified in the associated data sheet of the manufacturer.

## Example

The following image shows as an example the user-defined part properties for a Rittal enclosure of the type VX 25, part number VX8806.000.



### Note:

In Eplan Data Portal the Rittal parts already have these properties and the respective property values. Therefore, in Eplan Data Portal please use the function for updating the parts to add these properties to your parts data, if necessary. For all parts from other manufacturers please use these instructions to complete your parts data.